

C is a Sort of Needle with an Edge on one Side, which being pass'd thro' the *Tunica Sclerotis*, is then brought forwards thro' the *Iris* a little farther than E. This done, I turn the Edge of the Needle, and cut thro' the *Iris* as I draw it out : The Handle of this Needle is half black, and half white, which though it is not of much Use in this Operation, is very much so in couching Needles, we being thereby able to judge of their Position, when we do not see them.

F F is an Instrument to keep open the Eye-lids. G is a Bit of Iron, which as it is moved backward, or forward, the Instrument opens and closes.

IX. *An Account of several Stones found in the Kidneys of a Person opened by Mr. John Dobyns, Surgeon and Lithotomist to St. Bartholomew's Hospital and F. R. S.*

**M**R. *Laurence*, a Gentleman of about forty Years of Age, had for near twenty Years a Complaint in his Kidneys ; making bloody Urine upon any extraordinary Motion, but free from the great Pain, and all other Symptoms usually attending nephritick Cases. However, upon opening the Kidneys after his Death, there was in each a Stone of an extraordinary Size and Figure, besides one hundred smaller, which are brought for the View of the Society,

Society, with a Description and Draught of the two largest subjoin'd.

*Fig. I.* Shews the Stone denudated, as taken from the *Pelvis* of the right Kidney. (*See Plate the third, Figure the first*)

*a.* That Part which had branch'd into the *Ureter*, and totally obstructed its Channel. *b. b. b.* The eminent Parts of it. *c. c. c.* That Part which fill'd the Capacity of the *Pelvis*.

*Fig. II.* Shews the Stone taken from the left Kidney. (*See Plate the third, Figure the second.*)

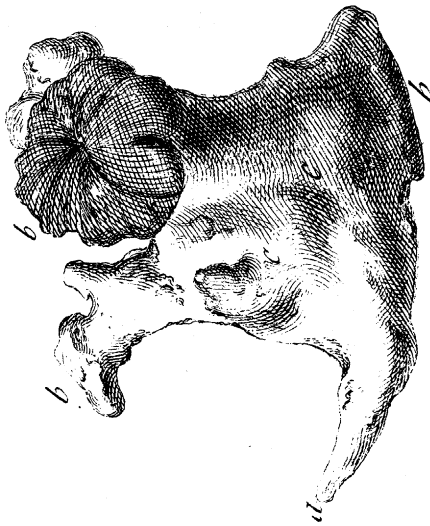
*a.* That Part which had protruded it self into the upper Part of the *Ureter*, but did not totally plug it up, by which Means the Urine had a Passage. *b. b. b. b.* The eminent Parts which branch'd into the *Fistulæ membranaceæ*. *c. c. c. c.* The Body of the Stone which lay in the *Pelvis* of this Kidney.

---

X. *Extract of several Letters &c. from different Parts of Europe, relating to the Aurora Borealis seen Oct. 19. N. S. 1726.*

**T**Hough the Accounts refer'd to have come to Hand very late, long since the Appearance of the Meteor, yet as it is manifestly the same with that remarkable one which was seen the same Night here,  
2 (*viz.*

*Fig. 1.*



*Fig. 2.*

